

MAJA 11



TABMARINE BARGE 1519

GENERAL INFORMATION

| | |
|----------------|----------------------|
| Yard number | YH303 |
| Builder | TABmarine B.V. |
| Year of built | Q1-2021 |
| Owner | Maja Stuwadoors B.V. |
| Flag | Dutch |
| Homeport | Amsterdam |
| Classification | Inland |

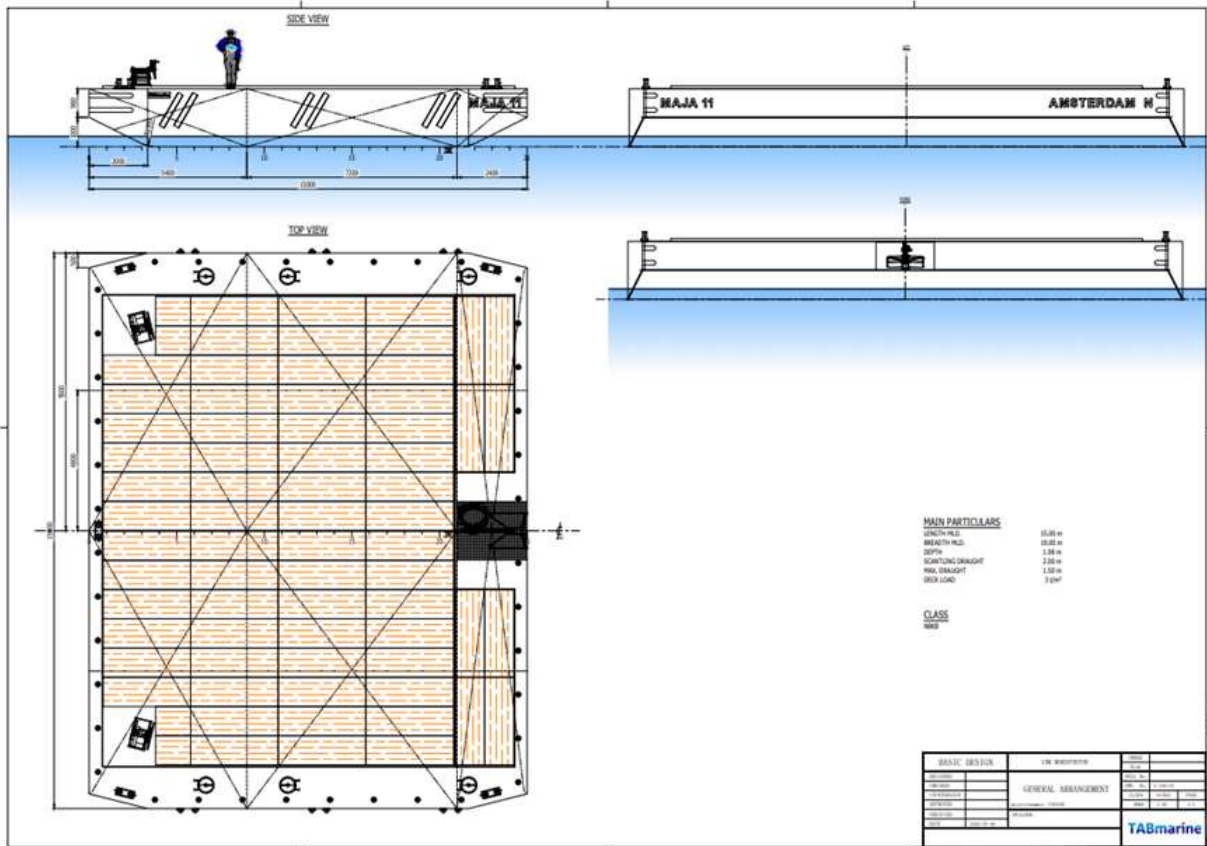
CONSTRUCTION & DIMENSIONS

| | |
|----------------|----------------------------|
| Length | 15.00 mtr |
| Beam | 19.00 mtr |
| Dept | 2.00 mtr |
| Draught | 1.50 mtr |
| Free deck area | 230 m ² approx. |
| Deadweight | 100 MT |
| Deck strength | 3 MT/m ² |
| Deck thickness | 10 mm |

OUTFITTING

| | |
|--------------------|---|
| Bollards | 5 double bit bollard 2,5 MT |
| Manholes | Flush single point opening |
| Draft marks | PS and SB at fore- and aftship |
| Lifting eyes | 4 x 30MT lifting eyes |
| Container fittings | Base plates railing all around |
| Winches | 2 Coupling winches SWL 5T |
| Mooring | Emergency anchor of 675 kg including quick release system |
| | 2 mooring lines |
| Mooring | At PS and SB 2x 6 D-fenders |
| Fender | Steel strips to host wooden deck |
| Deck protection | |

MAJA 11



TABmarine Barge 1519