

**COMILOG 02**



This barge has been designed for the following scope of works:

Maintenance, transportation, supplier, buoy laying, anchor handling, waste collection.

**TABMARINE BARGE 2008**

Super Shallow Draft Self-Propelled

**GENERAL INFORMATION**

Yard number	TAB2104
Builder	TABmarine B.V.
Year of built	Q2-2022
Owner	Comilog SA - GABON
Flag	Gabon
Homeport	Owendo
Classification	Bureau Veritas, Workboat Sheltered Area

**CONSTRUCTION & DIMENSIONS**

Length	19.40 mtr - 23.95 mtr
Beam	7.40 mtr
Dept	1.80 mtr
Draught	1.30 mtr
Air draft	3.00 mtr (wheelhouse low)
Free deck area	60 m <sup>2</sup> approx.
Deadweight	100 MT
Deck strength	6 MT/m <sup>2</sup> - 15MT/axle
Deck thickness	10 mm
Stores	1 SB and 1 PS store
Desk store	1 at SB for mobile pump
Wheelhouse	Raised type, steel/Aluminum

**MACHINERY**

Propulsion	2 Hydromaster Thrusters 145HP/each
Generator	1 Mitsubishi generator 30 kW

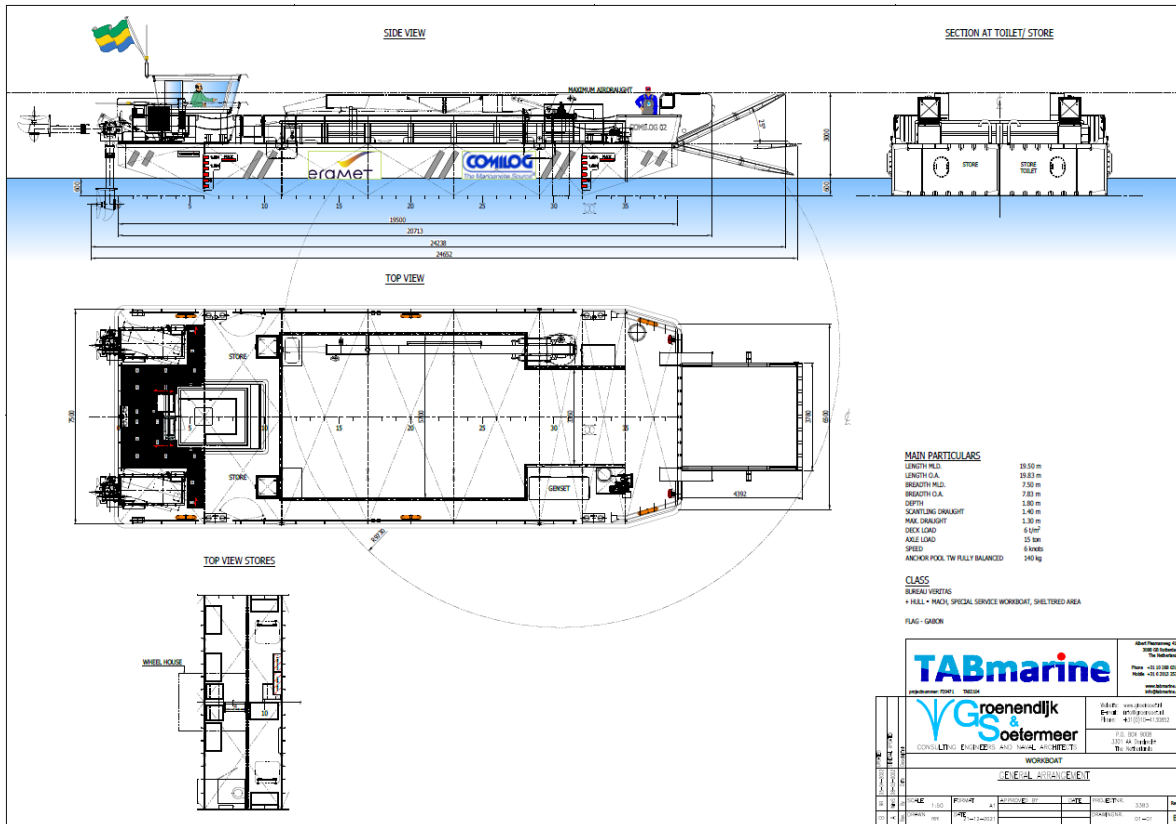
**OUTFITTING**

Bollards	5 double bit bollard 5 MT
Springs	2 mooring bits 5 MT at midship
Masts	Foldable Stainless Steel mast
Light stands	PS, SB and aft light stand
Manholes	Flush at deck and mainly below deck
Draft marks	PS and SB at fore- and aftship
Name, Port	Welded on ship's poutside
Cathodic protection	Zinc anodes
Lifting eyes	4 x 35MT lifting eyes
Coaming	A cargo coaming of 80 cm height
Ramp	At the bow, strength 15 MT/axle
Ramp handling	2 Hydraulic winches with steel cable
Anchor Winch	1 Hydraulic winch
Anchor/chain	1 galvanized HHP 140 kg + 12,5mm chain
Mooring ropes	4 Mooring ropes
Crane	1 telescopic boom crane with max outreach of 22 mtr
Pumps	1 mobile pump 25 M3/hr incl hoses
Toilet	1 Chemical toilet mounted in the SB store

**SAFETY ON BOARD**

Life buoys	8 buoys according class
Life jacket	4 Inflatable with light
First Aid	1 first aid locker
Fire fighting	6 Powder and 1 CO2 extinguishers
	1 fire blanket

**COMILOG 02**



# TABmarine Barge 2008